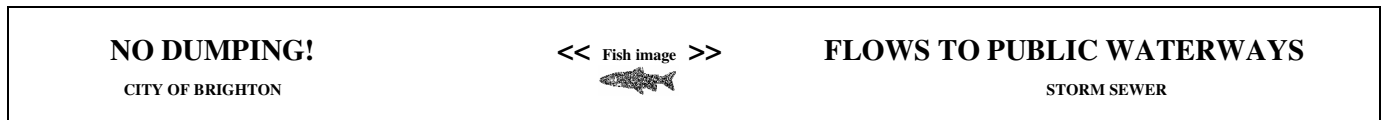




Storm Manhole Lid & Grate Inlet Requirements

Requirement

All new storm manhole lids and iron grate inlets shall be permanently imprinted with the image of a fish and must incorporate City of Brighton's approved educational message. The message must state the following, or an approved equivalent statement:



Why?

- 1) **Public awareness.** Unlike sanitary sewer, stormwater is **not** treated before entering local waterways. Runoff water is directly discharged into our local creeks and waterways. The City of Brighton imprinting requirement emphasizes the link between stormwater run-off and our natural waterways. By imprinting the educational message on stormwater manhole lids and grate inlets, the City is alerting local residents that everything that enters the stormwater drain system will end up in our local waterways affecting the aquatic environment, as well as the quality of our water supplies.
- 2) **Durable and Effective.** Unlike stenciled messages or other short-lived approaches, casting will last longer. This approach will be more effective and will discourage illicit dumping in the long term. Casting will also reduce the maintenance effort, paint cost and possible paint spillage associated with the Stormwater Stenciling Program. Now the program will be able to focus on the stenciling of existing stormwater structures only.

When?

The City of Brighton has been requiring that developers follow this policy since May 2005.

Message Specifications

The customized message and image must be specified on the plans. Lettering should be of sufficient size to be easily readable.

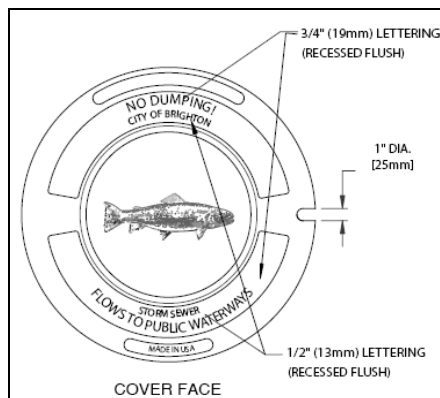


Fig 1. Imprinted Manhole Cover Lid - East Jordan Iron Works



Fig 2. Imprinted curb inlet – East Jordan Works

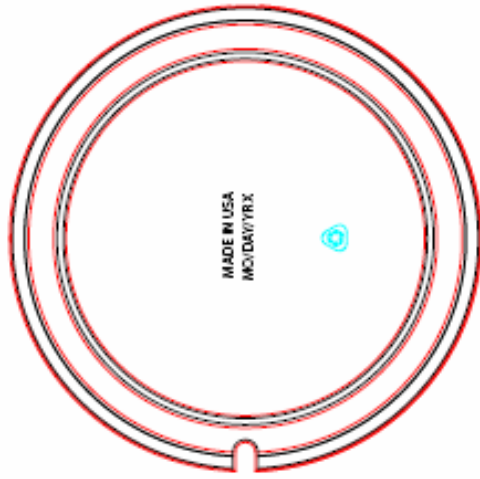
MANHOLE COVER

EST. WT.
 COVER: 112 LBS 51kg

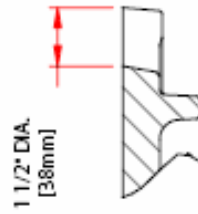
OPEN AREA
 N/A

MATL SPEC.
 COVER - GRAY IRON
 ASTM A48 CL35B

LOAD RATING
 HEAVY DUTY

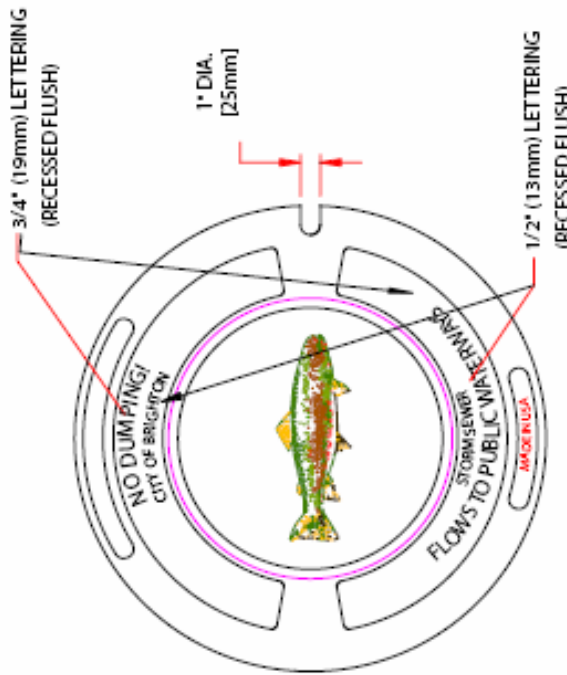


COVER BOTTOM

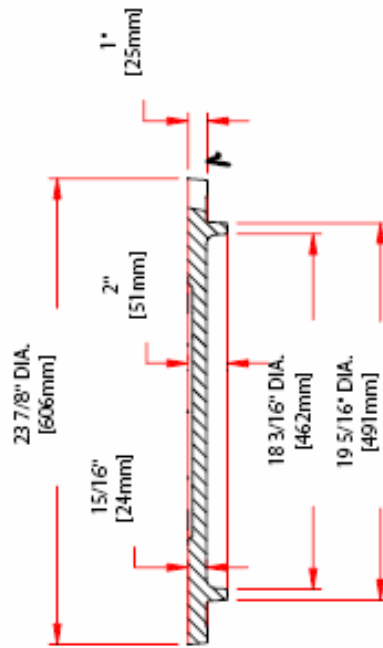


OPEN PICKHOLE DETAIL

✓ MACHINED SURFACE

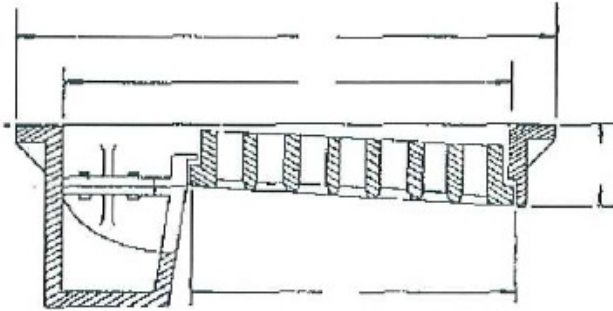


COVER FACE

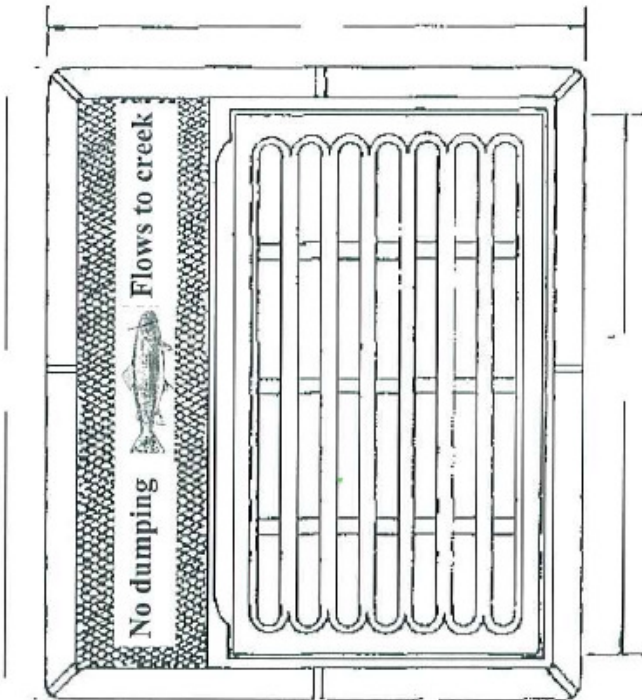


SECTION

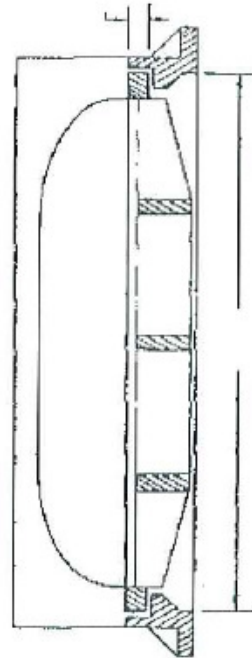
Grate Curb Storm Inlet



SECTION



PLAN VIEW



SECTION